

15 Ton – Adjustable Slide Mount Bracket

Hitch Capacity

6,000 lbs. Max. Vertical Load

30,000 lbs. Max. Gross Trailer Weight.

Made for 3 3/8" x 1 3/4" Bolt Pattern

IMPORTANT SAFETY INFORMATION

Maintain adequate vertical down (tongue) load to have control of the trailer (generally 10%), but do not exceed the above rated capacities

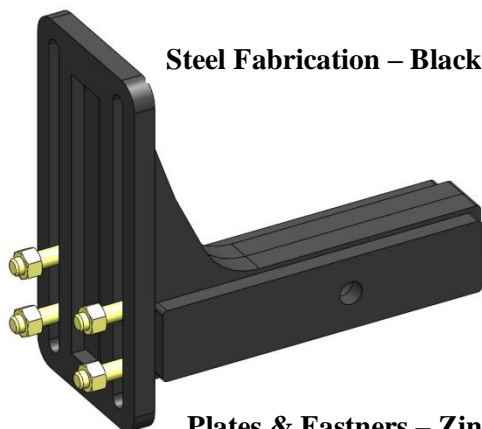
Other steps and inspections are also required. Consult OSHA and D.O.T. regulations and American Trucking Association for complete coupling and uncoupling procedures.

GENERAL INFORMATION

1. Do not modify or add to the product.
2. Wear safety glasses during installation, removal and servicing.
3. Never strike any part of the item with a steel hammer.
4. Do not weld on this product.
5. It is the user's responsibility to ensure that the receiver mount is capable of 6,000 lb. Vertical load and 30,000 lb. gross trailer weight.

TOWING APPLICATIONS

Trailers and equipment designed for on-road towing within the stated capacities. For off-road applications, reduce the capacities listed above by 25%, and use in conjunction with a swivel-type drawbar. This pintle hook/ball hitch is well suited for use in the utility and construction industries.



Steel Fabrication – Black Paint

Plates & Fastners – Zinc Plates

MOUNTING

1. Use a secure mounting structure of sufficient strength to support the rated capacity of the Hitch in accordance with SAE J 849B.
2. Secure with a 5/8" diameter bolt or pin, use locknut or locking pin to secure bolt or hitch pin. (Not included)



ADJUSTABLE SLIDE MOUNT BRACKET

1. Clevis bracket, Combo Hitch or Pintle can be mounted directly on the vehicle or mounted on our 15 Ton adjustable slide mount and slide into a receiver.
2. The receiver portion is longer to eliminate damage to vehicle when incurring high vertical loads.

Clevis bracket, Combo Hitch or Pintle sold separately).
CM12TWPA PCH10TFA HNH12TFA HNH25TFA

OPERATION AND MAINTENANCE

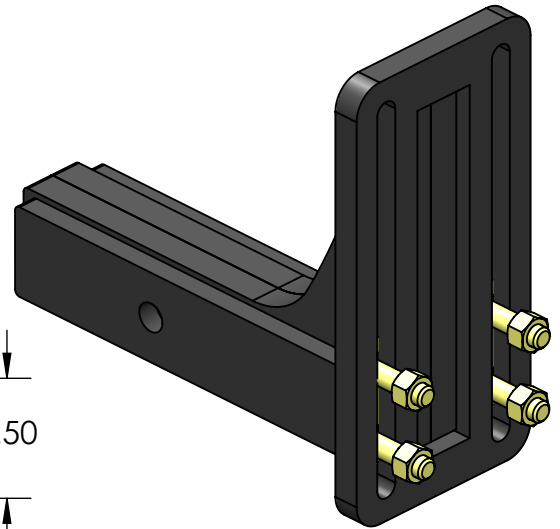
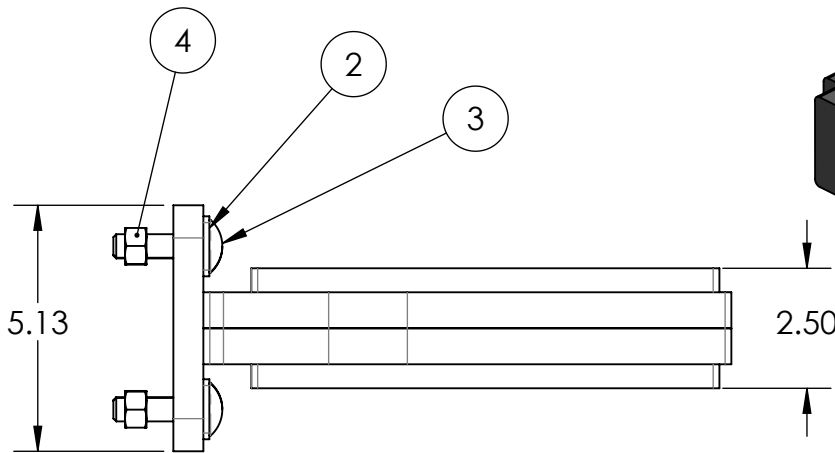
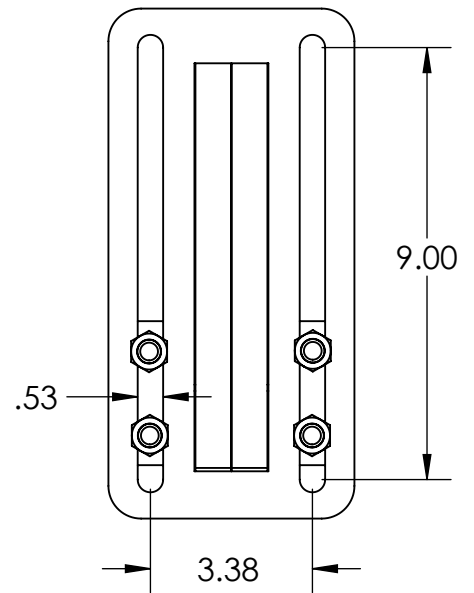
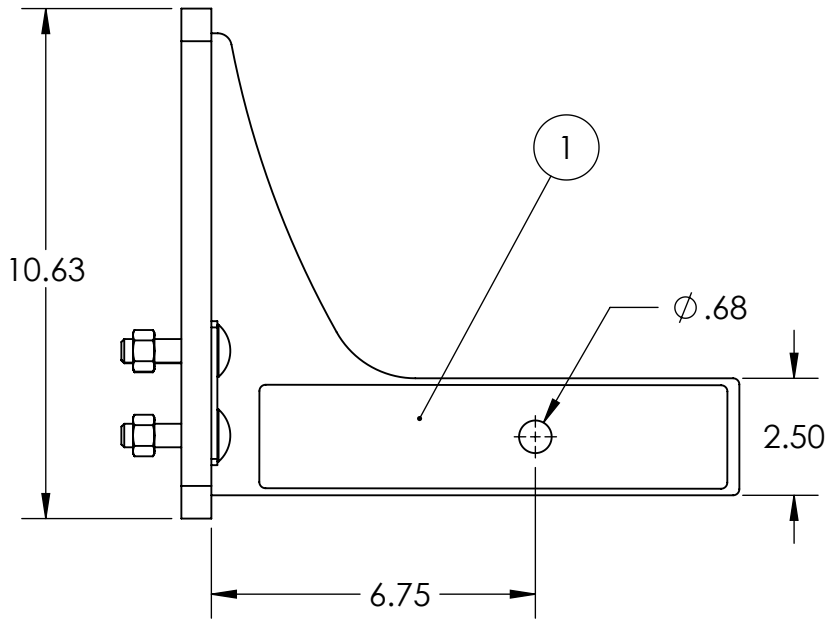
For proper performance, the following should be performed every 10,000 miles or 6 months, whichever comes first.

1. Inspect for proper operation.
2. Inspect, in particular, the coupling area. Replace when wear exceeds 1/8" (.125") from original surface profile.
3. Inspect for worn, damaged and missing parts. Replace as required.
4. Check torque specification of ball after the first 200 miles of towing and every 400 miles after that.

WWW.POWERPIN.CA


Warranty

This product is to be free from defects in material and workmanship for a period of one year from date of shipment. Parts must be properly installed. Any product which has been altered, Modified, misuse, or lack of maintenance will not be considered under warranty. Authorization from Power Pin Inc. must be obtained before returning any part. The sole responsibility of Power Pin Inc. under this warranty is limited to repairing or replacing any parts which are returned, prepaid, and are found to be defective by Power Pin Inc. No charges for transportation or labor performed on this product will be allowed under this warranty.



STEEL FABRICATION - PAINTED BLACK

All dimensions shown are nominal

4	HM53	1/2" STEEL LOCKNUT	GR.8	4
3	HM108	1/2"-13 x 2" CARRIAGE BOLT	GR.8	4
2	BSP12T	BRACKET SLIDE PLATE	44W	2
1	ASMB15TA	SLIDE ADJ. RECEIVER	44W	1
ITEM NO.	PART OR IDENTIFYING NO.	NOMENCLATURE OR DESCRIPTION	MATERIAL SPECIFICATION	QTY REQD
	NAME	DATE	 POWER PIN INC. DESCRIPTION: RECEIVER ASSEMBLY C/W SLIDE MOUNT BRACKET & BOLTS	
DRAWN	LW	Feb 8/15		
CHECKED				
ENG APPR.				
MFG APPR.				
Q.A.				
PROPRIETARY AND CONFIDENTIAL THE INFORMATION CONTAINED IN THIS DRAWING IS THE SOLE PROPERTY OF POWER PIN INC. ANY REPRODUCTION IN PART OR AS A WHOLE WITHOUT THE WRITTEN PERMISSION OF POWER PIN INC. IS PROHIBITED.			PART NO.	REV
			ASMB15TBA	0
www.powerpin.ca				