

12 Ton Flat Mount Pintle

Hitch Capacity

4,800 lbs. Max. Vertical Load

24,000 lbs. Max. Gross Trailer Weight

IMPORTANT SAFETY INFORMATION

Maintain adequate vertical down (tongue) load to have control of the trailer (generally 10%), but do not exceed the above rated capacities

Other steps and inspections are also required. Consult OSHA and D.O.T. regulations and American Trucking Association for complete coupling and uncoupling procedures.

GENERAL INFORMATION

1. Do not modify or add to the product.
2. Wear safety glasses during installation, removal and servicing.
3. Never strike any part of the item with a steel hammer.
4. Do not weld on this product.
5. It is the user's responsibility to ensure that the receiver mount is capable of 4,800 lb. Vertical load and 24,000 lb. gross trailer weight .

TOWING APPLICATIONS

Trailers and equipment designed for on-road towing within the stated capacities. For off-road applications, reduce the capacities listed above by 25%, and use in conjunction with a swivel-type drawbar. This pintle hook/ball hitch is well suited for use in the utility and construction industries.

DRAWBAR EYE DIMENSIONS

2" to 3" I.D. with 1-1/4" to 1-5/8" diameter cross section.

MOUNTING

1. Use a secure mounting structure of sufficient strength to support the rated capacity of the pintle hook in accordance with SAE J 849B.
2. Use the hole pattern described on the reverse.
3. Use (4) 1/2" (.50") grade 8 fasteners (per SAE J429), torque plated bolt to 65 ft-lbs., torque plain bolt to 100 ft-lbs.

OPERATING INSTRUCTION – PINTLE HOOK

Hitching Up

1. Before operating, inspect for proper operation, worn, damaged or missing parts, and secure mounting. Correct as required before use.
2. Unlock by removing safety pin.
3. Back vehicle until pintle captures hitch ring, then lower into place.
4. To lock insert safety pin.



**Austempered
Ductile Iron – Black Paint**

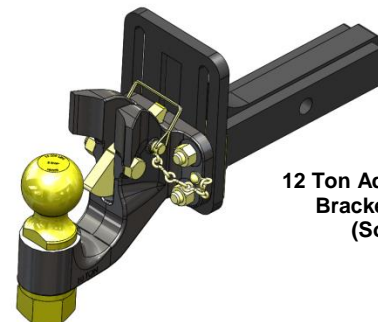
Un-Hitching

1. Unlock by removing safety pin.
2. Flip locking plate until it is pointing downward.
3. Jack up trailer hitch until it clears the horn, Drive away and the locking plate will reset for the next hook-up.

MAINTENANCE - PINTLE HOOK

For proper performance, the following should be performed every 10,000 miles or 6 months, whichever comes first.

1. Inspect for proper operation.
2. Inspect, in particular, the coupling area. Replace when wear exceeds 1/8" (.125") from original surface profile.
3. Inspect for worn, damaged and missing parts. Replace as required.
4. Always use safety clip.

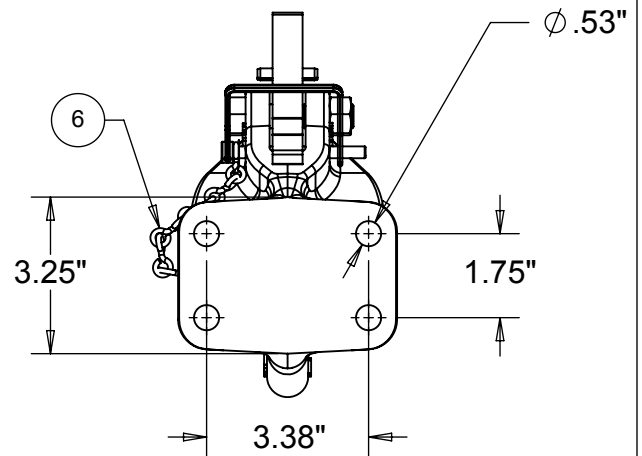
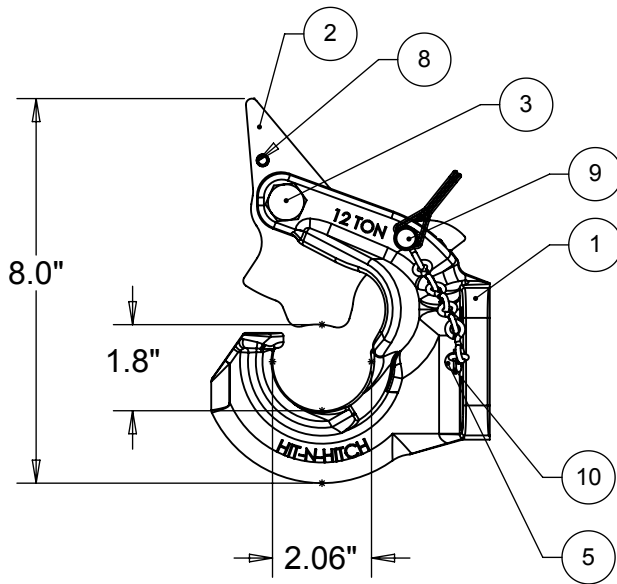
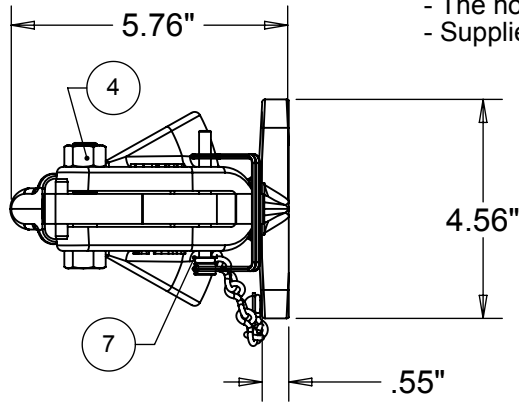


**12 Ton Adjustable Slide Mount
Bracket – #ASMB12TBA
(Sold separately)**

Warranty

This product is to be free from defects in material and workmanship for a period of one year from date of shipment. Parts must be properly installed. Any product which has been altered, Modified, misuse, or lack of maintenance will not be considered under warranty. Authorization from Power Pin Inc. must be obtained before returning any part. The sole responsibility of Power Pin Inc. under this warranty is limited to repairing or replacing any parts which are returned, prepaid, and are found to be defective by Power Pin Inc. No charges for transportation or labor performed on this product will be allowed under this warranty.


- 4,800 lbs. (2,180 kg) Max. Vertical Load.
- 24,000 lbs. (10,900 kg) Max. Gross Trailer Weight.
- Ductile Iron Cast body is heat treated for strength and durability.
- The hook is designed for maximum articulation and reduced wear.
- Supplied with a tethered lock pin.



All dimensions shown are nominal

- AUSTEMPERED DUCTILE IRON
- PAINTED BLACK

10	HM59	3/16" ID SAE STD WASHER	STEEL	1
9	HM58	1/4" DIA x 2 1/4" LG SAFETY CLIP	STEEL	1
8	HM57	1/4" DIA x 1 1/4" SPRING PIN	STEEL	1
7	HM56	1/4" PUSH NUT		1
6	HM55	SAFETY CHAIN - SINGLE JACK		1
5	HM54	3/16" DIA. ALUMINUM RIVET		1
4	HM53	1/2"-13 UNC STEEL LOCKNUT	STEEL	1
3	HM52	1/2"-13 x 2 1/4" CAP SCREW	STEEL	1
2	HM38TSL	LOCKING PLATE	STEEL	1
1	HNH5FT	BASE HITCH	ADI	1
ITEM NO.	PART OR IDENTIFYING NO.	NOMENCLATURE OR DESCRIPTION	MATERIAL SPECIFICATION	QTY REQD

	NAME	DATE		POWER PIN INC.	
DRAWN	LW	JUNE 6/13			
			DESCRIPTION:		
			HIT-N-HITCH 12 TON ASSEMBLY		
PROPRIETARY AND CONFIDENTIAL					
THE INFORMATION CONTAINED IN THIS DRAWING IS THE SOLE PROPERTY OF POWER PIN INC. ANY REPRODUCTION IN PART OR AS A WHOLE WITHOUT THE WRITTEN PERMISSION OF POWER PIN INC. IS PROHIBITED.			PART NO.		REV
			HNH12TFA		0
			www.powerpin.ca		